

Useful travel information

To help you travel safely we have listed a few web links to help you find useful travel information.

<http://www.safetravel.is/>

Webpage that was created by the Icelandic Association for Search and Rescue. Has useful information about travelling whether you are driving, hiking or by other means.

<http://www.vegagerdin.is/english/>

General information about road conditions and weather in Iceland. If you are travelling into the highlands we strongly recommend that you visit this website.

<http://en.vedur.is/>

Official website of the Icelandic Met Office (Weather office). Here you can find everything about the weather in Iceland along with information about seismicity, avalanches, pollution and more.

Hertz contact information

If your vehicle breaks down, please call: **+354 522 44 99**

In case of an emergency call: **112**

If you ever need our services during your travel don't hesitate to call or visit any of our rental locations, we will gladly assist you! Our main number is **+354 522 44 00**

Car Rental Locations	Tel
Keflavík	+354 522 44 30
Reykjavík	+354 522 44 20
Ísafjörður	+354 522 44 90
Akureyri	+354 522 44 40
Egilsstaðir	+354 522 44 50
Höfn í Hornafirði	+354 522 44 70
Vestmannaeyjar	+354 522 44 75
Landeyjarhöfn	+354 522 44 77

I'm aware that...

- My insurance does not cover damages when driving off road
- My insurance does not cover damages when driving in water/river
- My insurance does not cover damages to tires and underbody of the vehicle
- I need special insurance to cover damages when driving through ash/sandstorm

**There are many things
unique about
driving in Iceland**

Please be careful!

How to drive in Iceland

For a better journey!



Practical information on driving in Iceland

People who respect traffic signs
cause fewer accidents

+354 522 44 00 | hertz@hertz.is | www.hertz.is

Hertz®

Dear Customer - We welcome you to Iceland!

Iceland is unique and no other country in the world can give you the opportunities to enjoy the extremes of Mother Nature like our beautiful little island. We really hope that your exploration of Iceland will be both eventful and enjoyable and if you ever need our services during your travel don't hesitate to call or visit any of our rental locations, we will gladly assist you!

Although Iceland is considered to be one of the safest countries in the world some conditions are most likely different from what you are accustomed to. In order to make your holiday as safe and enjoyable as possible we would like you to take a moment and review this brochure closely.

Here are some points I would like you to take special notice of:

- **Great care must be taking when leaving asphalt roads** and driving on to gravel roads. The different surfaces can make the vehicle slide please slow down!
- **Blind summits (Blind hill) are common in Iceland** - please slow down and keep to the right as you will not see the approaching vehicle until very late.
- **Please be prepared for farm animals** grazing by the roadside and straying into or crossing the road.
- **There are many one-way bridges on the highways**, only one vehicle can cross at once.
- **Avoid driving when you are tired.** During summertime you can experience 24 hour sunlight, this confuses many people. We recommend not driving in to long hauls. Take brakes, enjoy nature and if you are really tired take a 15 minute nap ;)
- **Insurances do not cover:**
 - Damages when driving off road
 - Damages when driving in water/river
 - Damages to tires and underbody of the vehicle.

2WD vehicles are not allowed in the highlands and they are not insured on roads marked with "F" (All highland roads signs are marked with a F, i.e. F208). Driving these roads on a 2WD vehicle will incur a penalty. For more information please refer to article 10.b. of the rental terms and conditions.

I wish you a pleasant stay in Iceland and a safe journey home.

With kind regards

Sigfús B. Sigfússon
Managing Director

Hertz[®]
For a better Journey

Gravel Roads

Many rural roads in Iceland are gravel roads and not suited to fast driving. Please drive carefully and show other road-users consideration at all times. When you meet another car, slow down, and pull out to the side of the road.

General speed limit is 50 km/h in urban areas, 80 km/h on gravel roads in rural areas and 90 km/h on hard-surfaced roads.

Please note: Special warning signs indicate danger ahead, such as sharp bends and there is generally a separate sign to indicate the recommended speed.

Highland roads are for special cars. They are not meant for ordinary passenger vehicles. Insurance is limited on these roads.

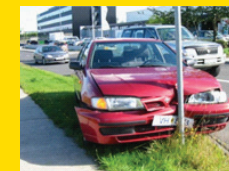
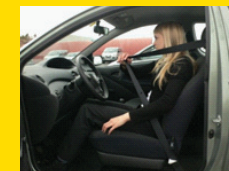
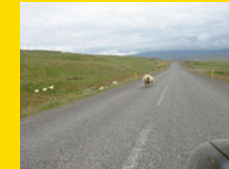
Driving off marked roads is prohibited. It results in irreparable damage to the land and the plant cover which may remain visible for centuries. This can cause claims for compensation.

Blind summits (blind hill/rise) are common in Iceland. They are marked with this sign (Blindhæð). Slow down and keep to the right as you will not see the approaching vehicle until very late.

There are many **narrow one-lane bridges** on the roads. They are marked with this sign. (Einbreið brú). Only one vehicle can cross at a time.

Tel 1777 for **information on Highland roads**, they can be impassable. Strong winds could blow the car off the road.

Driving in snow or ice is difficult, drive slowly, no quick turn of the steering wheel and use brakes with care.



Pay attention to **road signs**. Icelandic roads are small and often unpredictable.

Unbridged rivers in highland can be dangerous. Never cross it alone, check it first. Insurance does not cover damages caused in this situation.

Animals are often on the road or near it. They can easily run across the road when your car approaches.

Driving under influence of alcohol or drugs is prohibited.

Seat-belt use is obliged in all seats where they are available.

Never drive tired. During summertime you can experience 24 hour sunlight, this confuses many people. We recommend not driving in to long hauls. Take brakes, enjoy nature and if you are really tired take a 15 minute nap.

Headlights are obliged 24 hours.

Driving through sandstorms / Ash can be dangerous, it can be slippery and soft, slow down. Damages caused to the vehicle in this situation are not covered unless you take special insurance (SAAP).